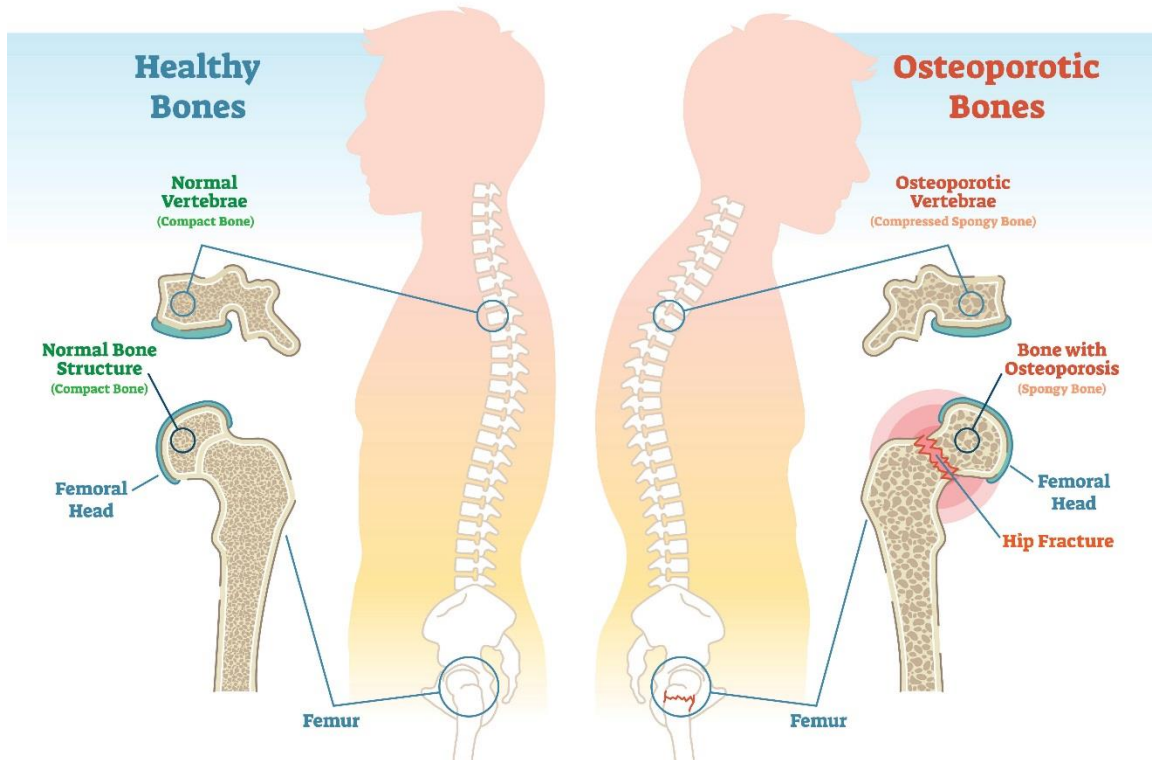


Osteoporosis and Spinal Cord Injury

OSTEOPOROSIS



Bone loss is one of the inevitable complications of spinal cord injury. Since people with paralysis don't typically put weight or pressure on their bones, they tend to lose bone density and often develop osteoporosis. But while osteoporosis in the SCI population first was studied in relation to calcium metabolism and the hypercalcemia and renal calculi that followed, there appear to be differences between SCI-induced osteoporosis and other causes of bone loss, such as prolonged bedrest and space travel.

Hypercalciuria (calcium dumped from the bones to the urine) is seen by 10 days following the SCI and reaches a peak 1-6 months postinjury. This level of hypercalciuria is 2-4 times that of persons without SCI who undergo prolonged bedrest. This increase is the direct result of a metabolic imbalance between bone formation and bone resorption. This model at the skeletal level following SCI resembles the high bone turnover rate seen in postmenopausal women.

Bone loss following SCI occurs throughout the skeletal system, with the exception of the skull. The distal femur and proximal tibia are the bones most affected, followed by the pelvis and the arms. The amount of demineralization in the skull, pelvis, and lower limbs is independent of the neurologic level.

In people with injury less than 1 year, reduction in bone mineral densities has been noted in the femur as much as 43 percent, as compared with controls. Over 50 percent of bone content in these regions is demineralized at the 10-year anniversary of the injury. (Bone fractures usually do not occur until bone mass is 30-40% below normal. Data from the Model SCI Systems show that 14 percent of people with SCI get fractures five years after injury. This increases to 28 percent after 10 years and 39 percent after 15 years. The frequency of fractures increases with age and completeness of injury, and is higher in women than men.)

The arms and trunk actually increase bone content after the 4-month point; the net effect is an approximate 10-21 percent loss of bone at the 10-year point. The trunk has a net gain in mineral content by 12 years post-injury.

As far as treatments go, there are drugs available to reduce the risk of broken bones. These drugs can slow or stop bone loss or rebuild bone. With drugs and exercise such as on an FES bicycle, osteoporosis can be lessened and bone density regained.

Web Sites

Osteoporosis and Spinal Cord Injury

Medscape Reference: Osteoporosis and Spinal Cord Injury

<http://emedicine.medscape.com/article/322204-overview>

Northwest Regional Spinal Cord Injury System: Osteoporosis in SCI

<http://sci.washington.edu/info/forums/reports/osteoporosis.asp>

This page has text and video of an October 9, 2007 presentation by Jelena Svircev, MD, assistant professor in the Department of Rehabilitation Medicine at the University of Washington.

Spinal Cord Injury Information Network: Osteoporosis (Bone Loss)

<http://www.uab.edu/medicine/sci/daily-living/managing-personal-health/secondary-medical-conditions/osteoporosis>

Spinal Cord Injury Information Network: Secondary Conditions of Spinal Cord Injury Health Education Video Series

<http://www.uab.edu/medicine/sci/uab-scims-information/secondary-conditions-of-sci-health-education-video-series>

The 19-minute Bone Health video discusses aspects of heterotopic ossification (classifications, etiology, diagnosis, prevention and treatment options) and osteoporosis (initial bone loss after traumatic injury, impact of aging, impact of menopause, prevention and treatment options). The video can be downloaded or streamed online.

Osteoporosis in General

Medline Plus: Osteoporosis

<http://www.nlm.nih.gov/medlineplus/osteoporosis.html>

National Osteoporosis Foundation (NOF)

<http://www.nof.org/>

251 18th St. S

Suite 630

Arlington, VA 22202

Phone: 703-647-3000, 800-231-4222 (Toll-free)

NIH Osteoporosis and Related Bone Diseases National Resource Center

<https://www.bones.nih.gov/>

2 AMS Circle

Bethesda, MD 20892-3676

Phone: 202-223-0344, 800-624-2663 (Toll-free), 202-466-4315 (TTY)

E-mail: NIHBoneInfo@mail.nih.gov

American Academy of Orthopaedic Surgeons: Osteoporosis

<http://orthoinfo.aaos.org/topic.cfm?topic=A00232>

The information contained in this message is presented for the purpose of educating and informing you about paralysis and its effects. Nothing contained in this message should be construed nor is intended to be used for medical diagnosis or treatment. It should not be used in place of the advice of your physician or other qualified health care provider. Should you have any health care related questions, please call or see your physician or other qualified health care provider promptly. Always consult with your physician or other qualified health care provider before embarking on a new treatment, diet or fitness program. You should never disregard medical advice or delay in seeking it because of something you have read in this message.

This publication is supported by the Administration for Community Living (ACL), U.S. Department of Health and Human Services (HHS) as part of a financial assistance award totaling \$10,000,000 with 100 percent funding by ACL/HHS. The contents are those of the author(s) and do not necessarily represent the official views of, nor an endorsement, by ACL/HHS, or the U.S. Government.